



WE NEVER STOP

WEBGATE400 R.9



webgate400
RELEASE 9

GRAPHICAL USER INTERFACE FOR IBM i



Webgate400

All in only one enviroment





INTRODUCTION

Webgate400 is the market-leading software for developing the graphical interface of IBM-i applications, both RPG and COBOL.

Periodic updates and new implementations allow your management applications to grow and keep up with new technologies while guaranteeing full backward compatibility.

With Webgate400, your management applications written in RPG become Windows and Internet-native, enhancing the value of your previous investments. A suite of tools allows you to focus only on management goals, minimizing design and customization times for screens.

The use of your management applications becomes more intuitive, practical, productive, and available everywhere, in the office or on the go.

The same program and display files, without any code changes, can work on a Windows desktop and, thanks to Power-B, via browser and smartphones or tablets, allowing for small and large customizations in content, size, functionality based on user roles, device physical format, and privacy.

Any customizations and new developments can be achieved with minimal effort. The IBM-i platform will continue to ensure data solidity and security.

For professional persons, this means having more space to express their management skills by developing multi-device and multi-platform graphic applications, without deal with the technological complexities that Webgate400 makes transparent.

Simplicity, cost-effectiveness, reliability, and quality of content are the characteristics that have led to the success of Webgate400, adapted to modern needs and technologies.

Webgate400 is also equipped with a constantly growing suite that includes valuable tools for document management, deferred document acquisition, digital signature, substitute conservation, data analysis and the visualization of dynamic and contextual tables, the generation of graphical prints, the management of translations into constant language and file messages, and more.

Furthermore, thanks to Crossgate, it is possible to modernize management applications written in COBOL400 or for which source code is not available.

Webgate400 allows you to create and distribute instant notifications on Windows clients, via browser and on any iOS and Android device. Simply log in with the Power-B app to automatically enable a device to receive push notifications. Any significant management message can be instantly directed to the user capable of handling it, minimizing downtime. Each notification can be paired with a relevant program with the message.



Available for all mobile devices

ADVANCED FUNCTIONS FOR MISSION CRITICAL APPLICATIONS

Innovation is made simple...

The modernization of your applications starts with a simple basic conversion of programs and their display files, which will be usable both in a 5250 environment and in a Webgate400 environment: you will have a single object, a single source and above all a single maintenance!

Implementations related to the graphical version are carried out directly in the sources – in hidden fields or comment lines – and will no longer need to be repeated in case of changes.

...customizable...

After the modernization phase of Webgate400, all the screens of your management applications become extremely customizable with no changes to the programs.

With the release 9 of Webgate400, a completely updated Designer has been released, even more user-friendly and able to create screens in native graphical mode with DDS compilable in display files, abandoning SDA and eliminating the use of TEXT.

Webgate400 R.9: how it meets your needs.

Would you like to give a new life to your RPG programs?


Webgate400 R.9 reaches the milestone of SDA FREE development: it is now possible to design video interfaces directly with the graphic tool WGD designer, eliminating any size or complexity constraints. All this without rewrite your RPG programs, or abandon the IBM i platform, thus revaluing your previous investments.

Would you like to highlight your work?

Webgate400 R.9 provides all the tools to focus exclusively on your goals, minimizing the design and customization times of the screens. The 64-bit client, native validation lists, the ability to display HTML5 content, the new and modern FLAT style, and other important innovations shape the ideal work companion, capable of facilitating the development of applications and adapting to any managerial environment.

Have you ever thought about using your RPG programs on all mobile devices?

Compatibility on all mobile devices and all major browsers allow you to use Webgate400 "ON-THE-GO": where, how, and when you want!



The other customization functions allow you to easily enhance existing programs by inserting new fields and columns based on SQL instructions, mathematical formulas, and references to other programs.

You can also display icons indicating a status, images, and hyperlinks, perform hierarchies, filters, etc.

In Webgate400, the introduction of application controls is made extremely simple through the use of exit programs, which allow you to verify the content of fields by issuing blocking or non-blocking messages, modify data present on the screen itself and/or in the database, and run custom programs.

The arrangement of screens on the screen is equally customizable: thanks to the Multi Template Interface interface, each user can open multiple screens simultaneously in an organized manner and, if desired, synchronize them with each other.

Each screen can be composed of different applications in order to have data from various management systems at hand, such as open orders, bills of materials, cost analysis, attachments relevant to the displayed data, and more. The data from the applications can be synchronized through Webgate400 functions, as well as

organized and displayed in graphs to take advantage of aggregate and detailed views without having to search through different applications.

This function also allows you to archive documents without necessarily linking them to a specific subject. It is also possible to make a multiple selection of multiple files to be linked to one or more subjects simultaneously.

Tabs also allow you to view additional data on each screen, extracting information from the database of your management applications or, alternatively, using selections generated by the additional module FastQuery400.

You can also filter data on screen using the existing fields.

All this is configurable for Company-User-User Group-Language-Device.

...and multilingual.

The Webgate400 client is already available in numerous languages, allowing users of different nationalities to use the same software in their preferred language.

Furthermore, the "Translate" add-on module facilitates the translation of constants and application messages file.



BASE CONVERSION

WEBGATE400 | R.9

The first step of the modernization process is the basic conversion of programs and display files. In this phase, which is completely automatic, function keys and subfile options are inserted into practical ribbons, fields with multiple values are translated into "combo boxes", and date and numerical fields are enriched with a practical calendar and calculator.

Even the main graphical elements managed through native IBM keywords are automatically converted in this phase.

The basic conversion of Webgate400 also makes applications multitasking and multi-company.

Webgate400 solves the need to provide your applications with online help, linking it to individual fields (viewable via tooltip), screens, functions, and menus.

Conversion of subfiles into tables

The basic conversion of Webgate400 also modernizes subfiles by transforming them into tables, allowing for better use and complete customization of the information on screen.

Column headers are automatically recognized; it is also possible to force column headers and set multi-headers.

In the presence of drop, additional rows are added to the first; it is also possible, optionally, to maintain the drop itself.

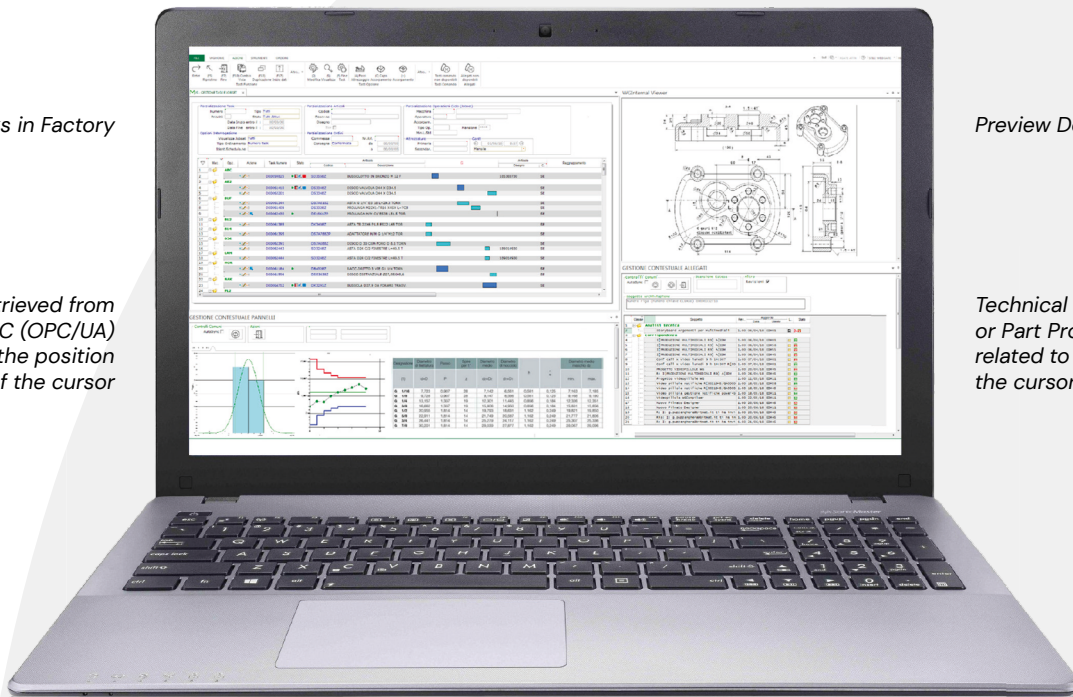
Thanks to the basic conversion of Webgate400, every user can use the information of any subfile more practically!

With just a few clicks, authorized users can change the sorting, layout, and size of columns, lock them, hide unnecessary ones, add new ones, filter and hierarchize information, use calculation formulas, export the entire subfile or only certain cells/rows/columns to Excel, as well as zoom in on the subfile itself.

Each modification can also be saved for later reuse, and it is possible to return to the initial configuration at any time.

Active tasks in Factory

Data retrieved from CNC (OPC/UA) related to the position of the cursor



Preview Document

Technical documents or Part Program related to the cursor position

Additional automatic features

Print Box: to view and download all prints in pdf, tiff, txt, html format, spool preview and Afpds print viewing.

WG Bookmarks: to create a list of most used programs for quick access without using the menu.

WG File Manager: to manage and transfer files between the user's computer and the IBM i system.

Internal Viewer: to view documents and/or web pages in a hidden and resizable side panel.

File Downloader: to export DB2/400 files in excel, xml, and txt format.

Data interceptor: to save specific data from the screen to a text file when a certain event occurs.

Shared Notes: to insert, notify and share graphic notes among all Webgate400 users.

SQL Beautifier: to compose SQL statements (including creating stored procedures and UDFs) using a dedicated wizard.

System Utilities: to perform main user/system functions (wrkactjob, wrkus rjob, dspmsg user and sysopr, dspjoblog) directly from the Webgate400 client.

The modernization of Webgate400

After the basic conversion, a more advanced modernization step can be taken by inserting customizable graphic objects according to your needs:

- **FRAME:** to logically and orderly organize information on the screen.
- **TABS:** to divide and organize data from one or more video formats.
- **IMAGES:** to insert images into your management application by indicating the path and name.
- **CHART:** to enhance programs with a library of ready-to-use graphics.
- **LINK:** to link documents of various formats, set URLs and email addresses, navigate to specific directories, call IBM i programs, execute SQL statements, and automatically display the results, and more.
- **ICON:** to insert icons that quickly identify the state of information or execute options and function keys.
- **BUTTON IMAGE:** to send parameters to the program to be executed with a simple click; it is also possible to define images that act as function keys.





- **COMBO LIST:** to display the possible values of a field, along with their description and any icons.
- **SEARCH:** to activate searches using the right mouse button, possibly also associating them with a function key.
- **LOB FIELDS:** to transform normal on-screen fields (e.g. for inserting notes) into a free input with formatting tools and the ability to add images.
- **FILE CHOOSER / FILE MANAGER:** to include controls within screens for accessing and selecting local and remote files, as well as utilities for transferring files from IFS to a local PC and vice versa, and managing the files themselves.
- **BROWSER FIELD:** to present the user with management data in a rich and expressive format, but also to view a webpage in a display file.
- **SQL OBJECTS:** to display data retrieved directly from databases through SQL statements.
- **TILES OBJECTS:** to create personalized menus for quick access to any program with the ability to specify a system value.

Customization Suite

Each screen of your modernized management application with Webgate400 can be integrated with customizations that do not require changes to the RPG code and make new queries, graphs, tables generated by complex SQL statements, formulas, and EXIT PROGRAMS available.

All connected to the data actually present on the screen. The customizations made are connected to the data actually present on the screen.

The customization elements made available by Webgate400 release 9 are:

- Custom Command Service
- Tabs
- Data Downloader
- Translation of constants on screen
- Object attribute maintenance
- Synchronizations
- Generic queries
- Command groups
- Derived databases
- XML file import
- File Uploader
- Generic calculations
- Validations
- Graphical panels



Move from transactional to navigable

The modernization of your management applications radically changes their usability. It will be possible to navigate among the various programs that make it up without enter the necessary parameters each time and without using the menu.

This process is possible thanks to the Command Service functionality, which allows you to "anchor" native AS/400 programs, SQL statements, and PC executables to all fields of your management application – based on the full or partial name of the field itself and its nature.

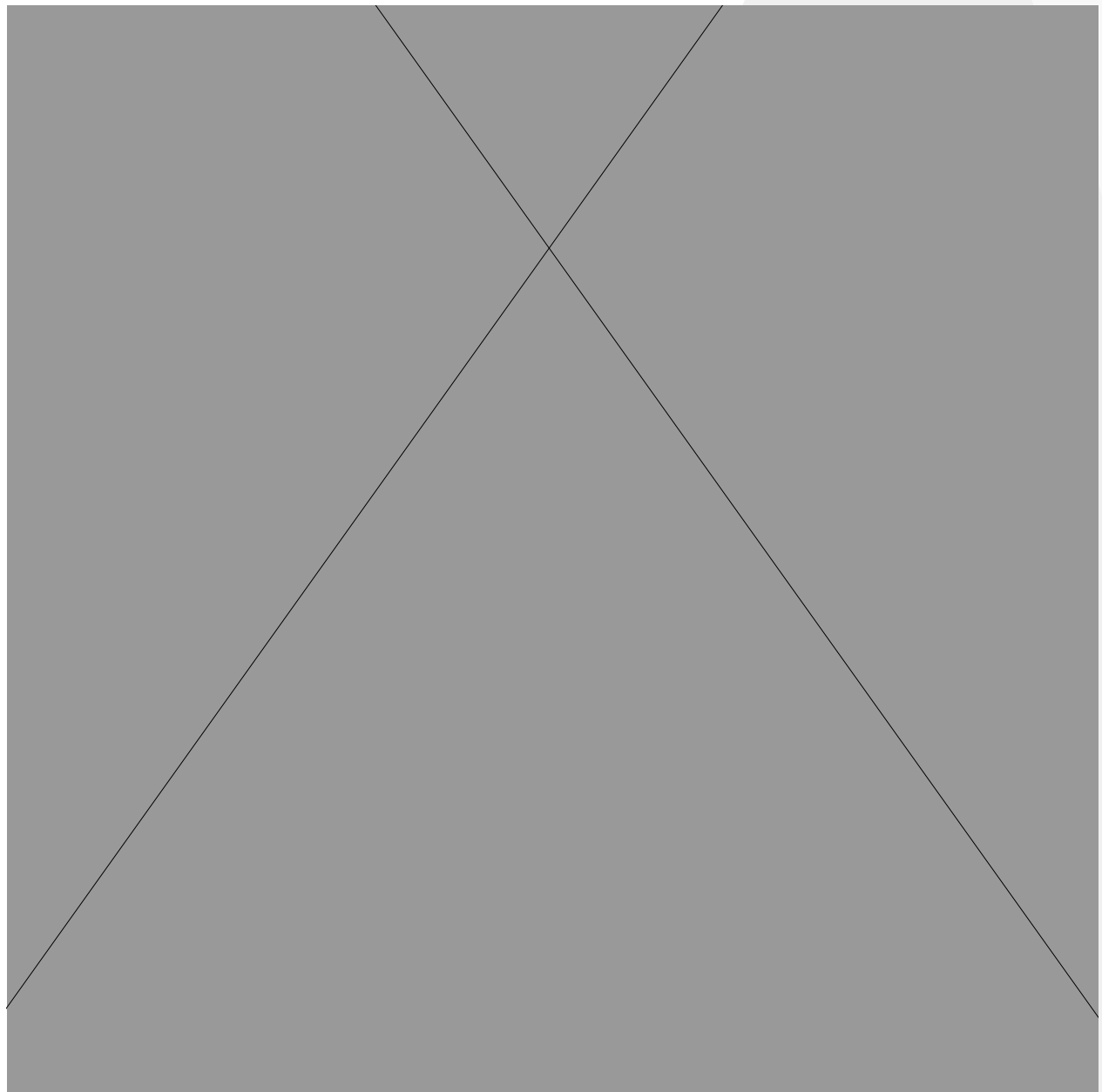
In all modes, it is possible to pass static or dynamic parameters (i.e. the values present on the screen itself).

Through the Command Service, for example, it is possible to call up a program to query orders for a specific item whose code is contained in a field on the screen.

After the basic conversion, a more advanced modernization step can be taken by inserting customizable graphic objects according to your needs:

The Command Service is divided into:

- **More info** (executes the command via double click)
- **Generic** (allow you to choose the desired program from a list displayed in a specific menu or toolbar)
- **Link** (call up "Database Link", the document management module of the Webgate400 suite)
- **Drag&Drop** (allow you to deposit an attachment by selecting it and dragging it onto the selected management object, such as customer code, supplier, order, or invoice).



HOW TO USE WEBGATE400

Prerequisites

Program sources in RPG containing a video format with its corresponding record formats.

Project setup:

Webgate400 allows you to define many "projects" (different applications, versions, individual modules, etc.).

The setup allows you to define libraries containing the sources, objects, and rules for the automatic recognition of options, function keys, and fixed elements of the screens.

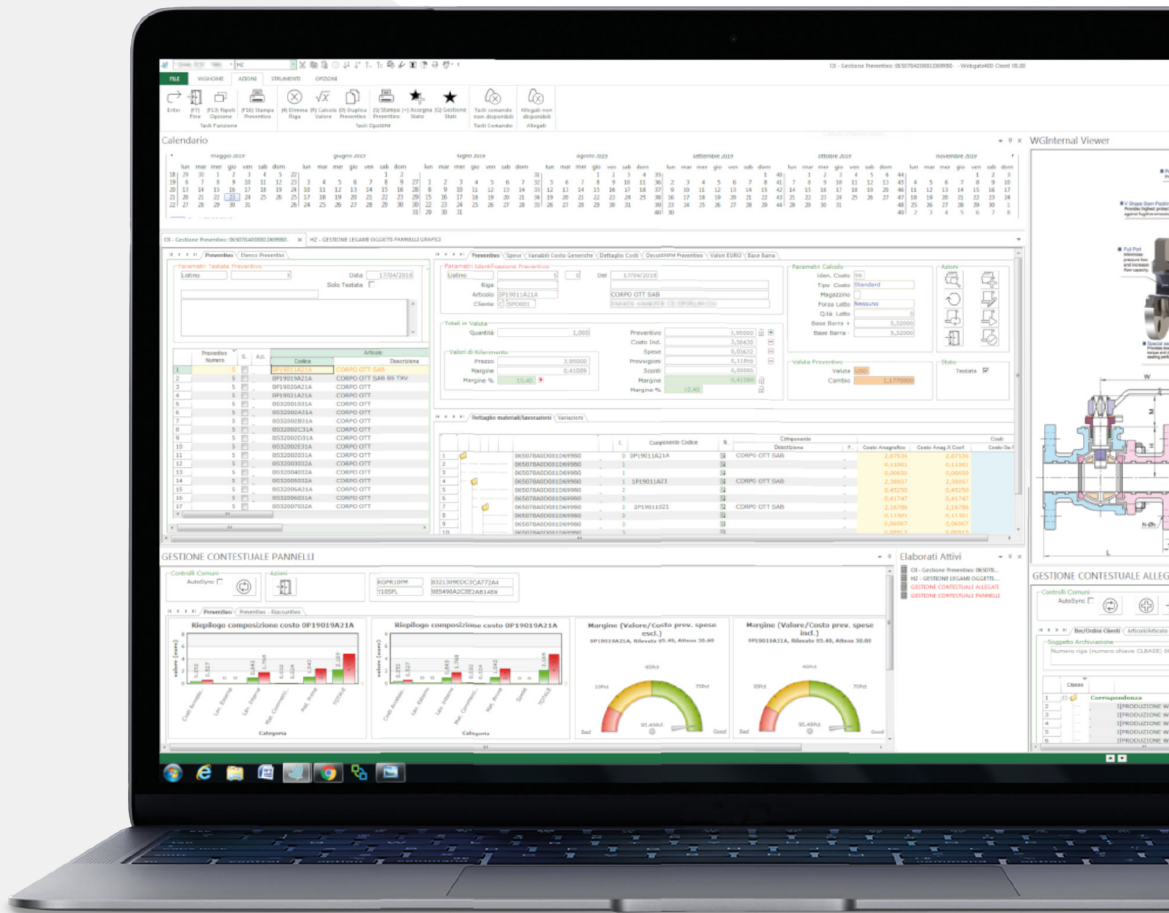
To perform this activity, a special function of the application is used only once.

A procedure:

Traditional PDM functions are used for code editing operations, allowing the modification of video formats and programs without any additional activities.

Useful additions to the graphical version are directly included in the emerging programs and do not need to be repeated in case of modification.

For compilation operations, in addition to using the PDM option "14" (compilation), the "WG" option is executed, which is automatically defined at the time of Webgate400 installation.



LICENSES TYPES

	<h2>PUBLIC</h2> <p>Modernizes and runs applications. It allows the publication of compiled programs for other IBM i systems which in turn must have installed either a Webgate RUNTIME or PRIVATE license. This license is typically used by groups of companies with a star architecture IBM i or by Software Houses to modernize their management applications and deliver them to their clients.</p>
	<h2>PRIVATE HA</h2> <p>Modernizes and executes applications for the main IBM i system where the software license is installed, and for an additional second machine by technically controlling the two serial numbers. In the event that the second machine serves as a CBU machine, it is sufficient to install a RUNTIME license on this system. However, if the second machine must ensure operation in HA mode in the absence of the first machine, it is necessary to also install a PRIVATE HA license on the second machine.</p>
<h2>PRIVATE</h2> <p>Modernizes and executes applications exclusively for IBM i where the software license is installed. License typically used by the company that has a single system for both software production and its related use.</p>	
<h2>PRIVATE XT / RUNTIME XT</h2> <p>Thanks to the XT (Extended) version, the Runtime and Private licenses are enriched with some of the most popular features of the add-ons: Database Link, FastQuery400, and PSG400.</p>	
<h2>RUNTIME</h2> <p>Allows only the execution of modernized applications via Private HA or Public license. This license does not allow the possibility of compiling a management application for modernization.</p>	



webgate400

RELEASE 9

Produced by:
Webgate Italia S.r.l.
www.webgateitalia.it



webgateitalia